



EKO
PEARL TOWERS

The Perfect Location

In the center of Eko Atlantic, the future heart beating prime location of Lagos,

Eko Pearl Towers rise its unprecedented elegance.

Rising on land reclaimed from the Atlantic Ocean off Victoria Island in Lagos, the towers sit in a self contained area with a safe and secure parking.

The garden terrace is **22,738 sqm**, and comprises a swimming pool, 2 tennis courts, a squash court, children's playground, landscaped paths, sitting areas and an open-air bar. Each individual tower will have its own private health club, meeting room and lounge.





Eko Atlantic is More Than A City...

Lagos is the economic capital of Nigeria, the most populated country in Africa. With its coastal location and abundant natural resources, Lagos is ideally positioned to take a leading role in the African economy and become a major global force.

A quarter of a million people will live and work in Eko Atlantic. The city will be a lively, vibrant place by day and by night. All the elements of modern city life will be conveniently located: workspace, shops, services, schools, cultural and recreational areas as well as places for religious worship.

Eko Pearl Towers are just under 500 meters away from the financial center of Lagos. The location is close enough not to endure long drives to work, but far enough to enjoy the splendor of quiet living.

EKO
PEARL TOWERS



ATLANTIC OCEAN



*From concept to construction
and finishing material, it is
a Pearl by all means.*



Eko Pearl Towers consists of 5 towers.

Each tower has its own identity and color, highlighting the slight difference in their design and outer structure, yet preserving the same state-of-the-art infrastructure and luxurious touch.




Eko Pearl Penthouses

Each tower is crowned with Royal penthouses, providing an even higher and richer home experience.





A modern office lobby with a warm, wood-paneled interior. The walls and ceiling are finished with dark wood panels, some of which are illuminated from within. The floor is a mix of light wood and dark, reflective tiles. In the foreground, there are several white, modern armchairs with black seats and chrome bases. A tall, white lamp with a large, cylindrical shade stands in the middle ground. To the left, a reception desk is visible, with a woman in a dark dress walking towards it. In the background, a man in a suit and a woman in a white blouse are standing and talking. Large windows on the left side of the lobby offer a view of the outside world.

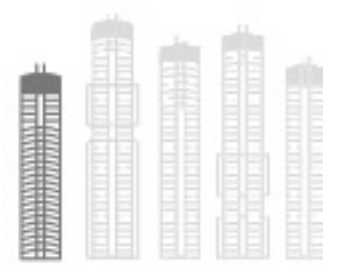
*Welcome to
Eko Pearl Towers*

Phase A





EKO
WHITE PEARL
TOWER

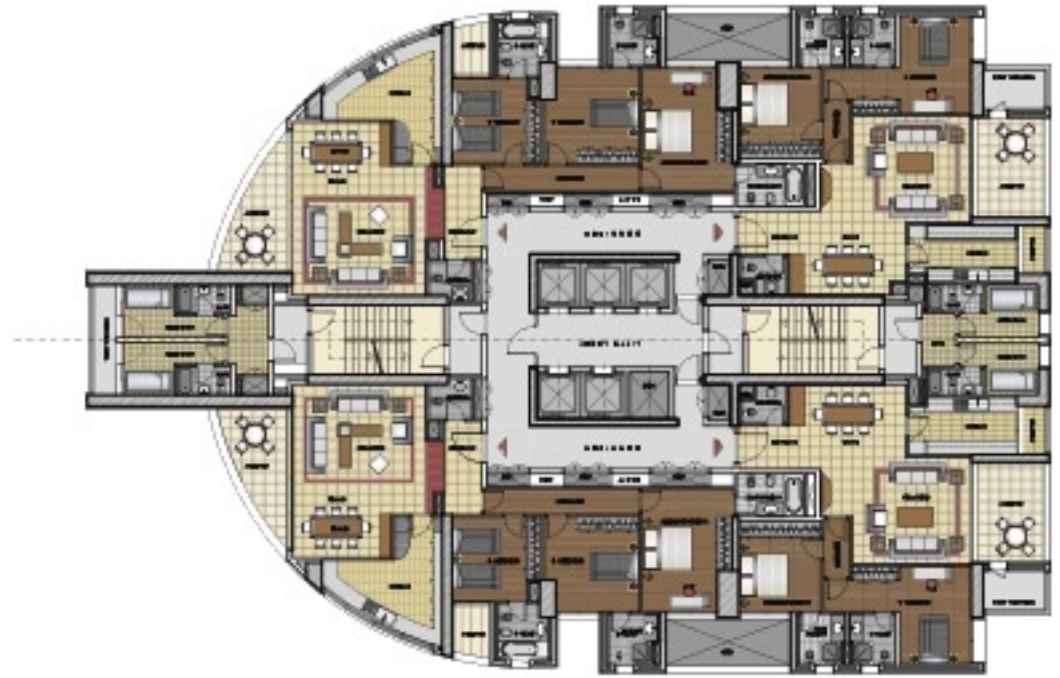


EKO WHITE PEARL TOWER

Apartments from 1st to 18th floor

The tower consists of 24 residential floors; there are 4 apartments per floor, 2 apartments on the royal penthouse floors, a technical floor, a ground floor and a basement floor. In addition, the tower includes a private health club, meeting room and lounge.





*White Pearl Apartments
consist of:*

Type A: 178 sqm

Entrance - reception - dining - kitchen - 3
master bedrooms - guest toilet - balconies
- maid's room with its bathroom.

Type B: 144 sqm

Entrance - reception - dining - kitchen - 2
master bedrooms - guest toilet - balconies
- maid's room with its bathroom.

Type C: 178 sqm

Entrance - reception - dining - kitchen - 3
master bedrooms - guest toilet - balconies
- maid's room with its bathroom.

Type D: 144 sqm

Entrance - reception - dining - kitchen - 2
master bedrooms - guest toilet - balconies
- maid's room with its bathroom.



ROYAL

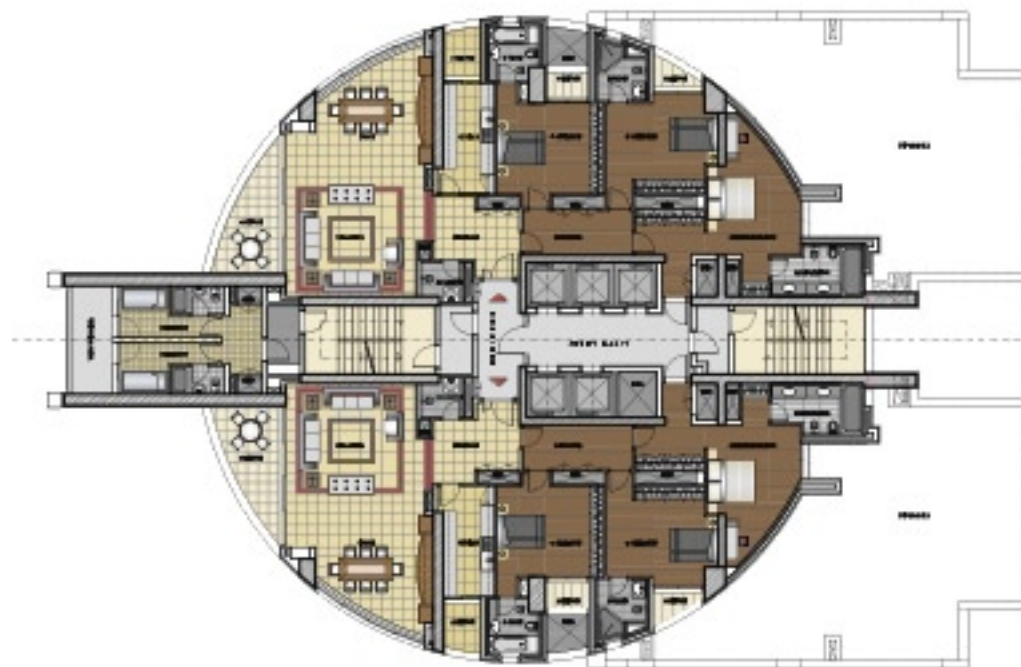
EKO PEARL
PENTHOUSE

Royal apartments 19th floor

Type E: 248 sqm (with big terrace)

Entrance - reception - dining - kitchen - 3 master bedrooms - guest toilet - balconies - maid's room with its bathroom.





Royal apartments from 20th to 24th floor

Type F: 248 sqm

Entrance - reception - dining - kitchen - 3 master bedrooms - guest toilet - balconies - maid's room with its bathroom.







Phase B





EKO
BLACK PEARL
TOWER

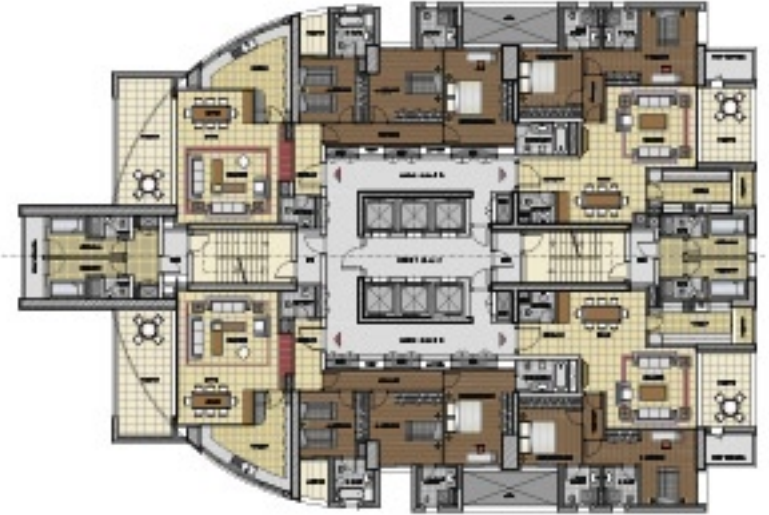
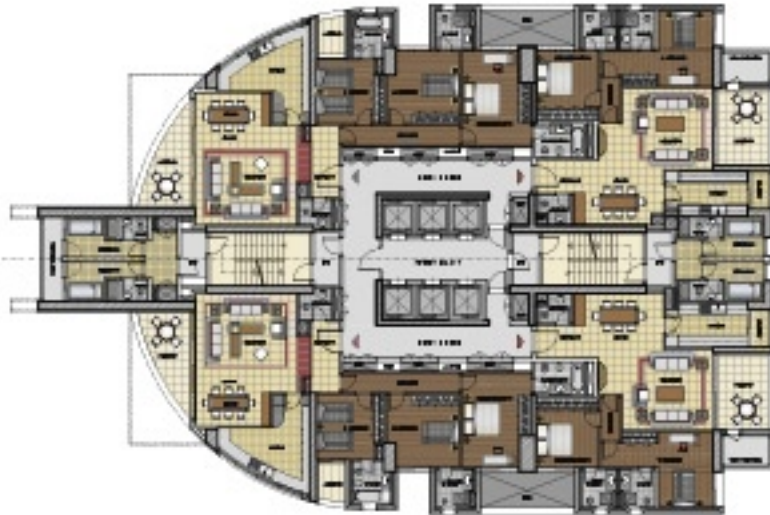


EKO BLACK PEARL TOWER

Apartments from 1st to 23th floor

The tower consists of 30 residential floors, there are 4 apartments per floor, a technical floor, a ground floor and a basement floor. In addition, the tower includes a private health club, meeting room and lounge.





*Black Pearl Apartments
consist of:*

Type A: 178 sqm

Entrance - reception - dining - kitchen - 3
master bedrooms - guest toilet - balconies
- maid's room with its bathroom.

Type B: 144 sqm

Entrance - reception - dining - kitchen - 2
master bedrooms - guest toilet - balconies
- maid's room with its bathroom.

Type C: 178 sqm

Entrance - reception - dining - kitchen - 3
master bedrooms - guest toilet - balconies -
maid's room with its bathroom.

Type D: 144 sqm

Entrance - reception - dining - kitchen - 2
master bedrooms - guest toilet - balconies -
maid's room with its bathroom.

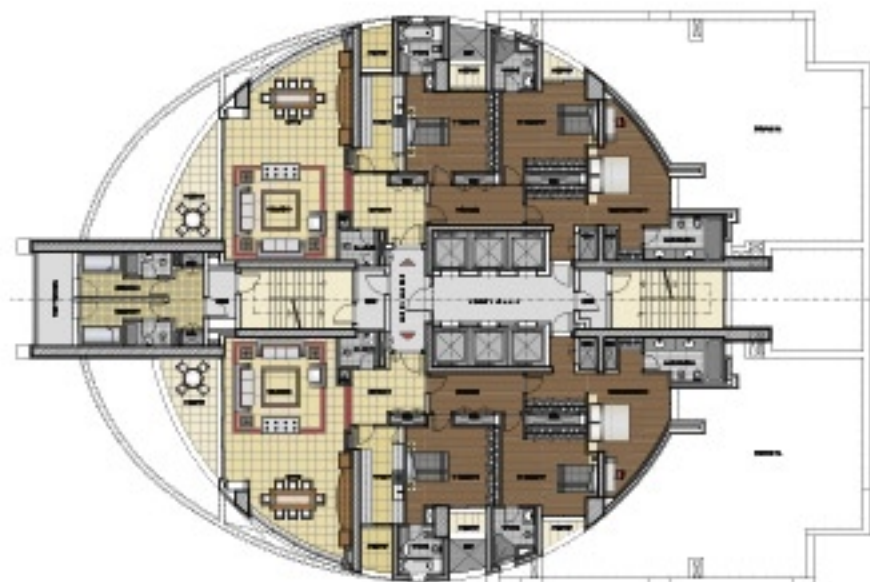
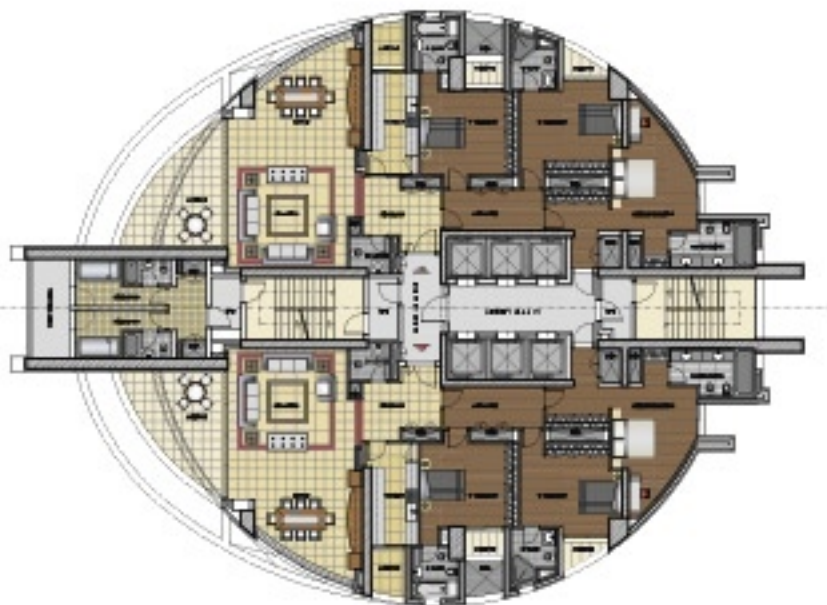


ROYAL

EKO PEARL
PENTHOUSE

*Royal apartments
from 24th to 30th floor*





Type E: 248 sqm (with big terrace)

Entrance - reception - dining - kitchen - 3 master bedrooms - guest toilet - balconies - maid's room with its bathroom.

Type F: 248 sqm

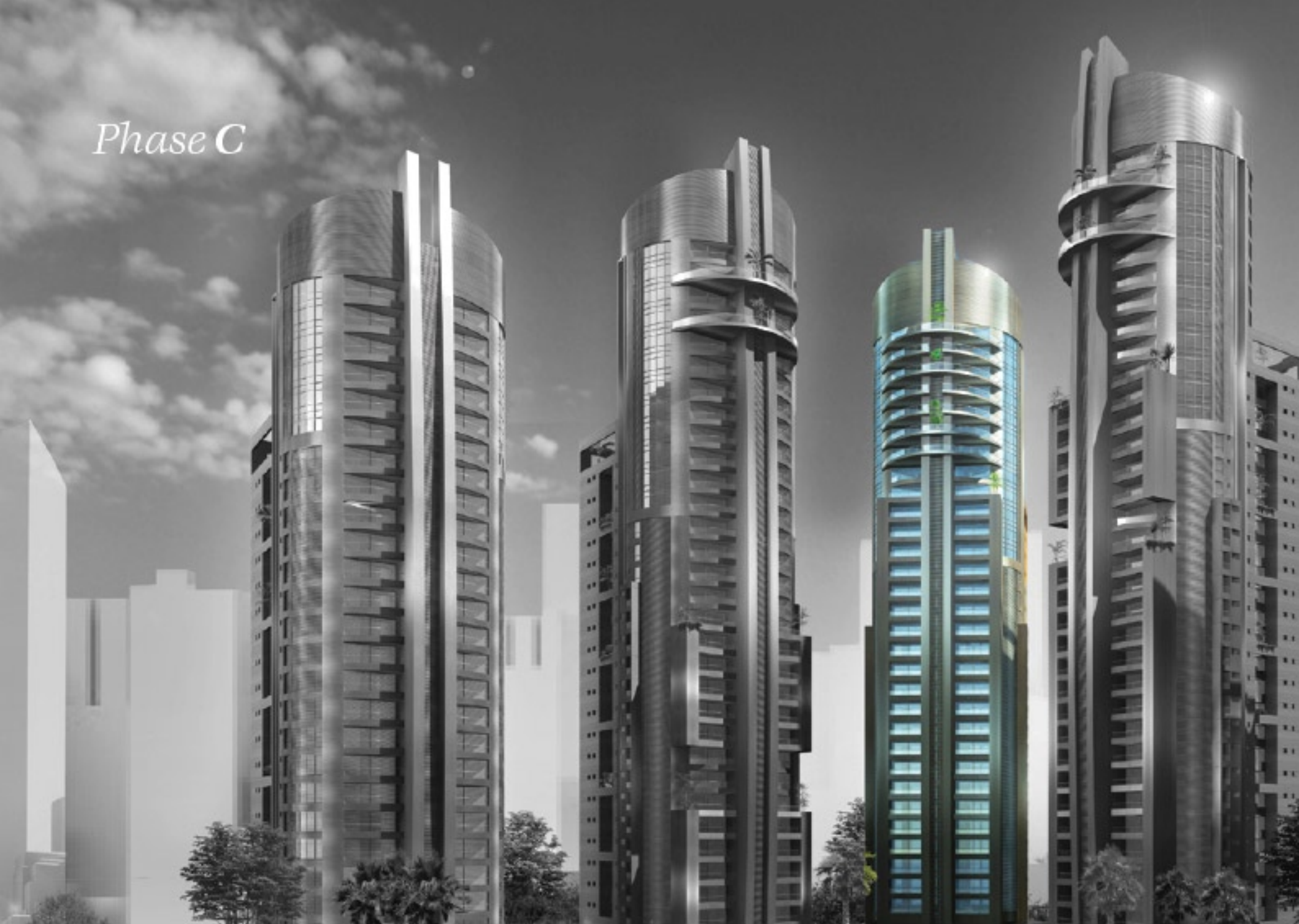
Entrance - reception - dining - kitchen - 3 master bedrooms - guest toilet - balconies - maid's room with its bathroom.







Phase C





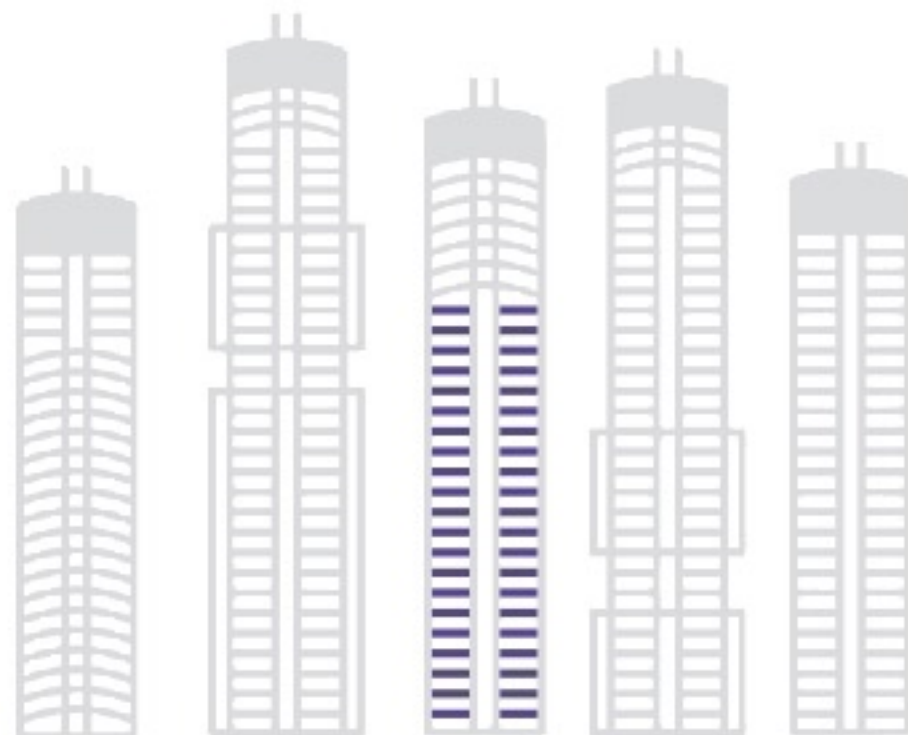
EKO
INDIGO PEARL
TOWER



EKO INDIGO PEARL TOWER

The tower consists of 30 residential floors and benefits from the common garden terrace at the top of the podium and has a private health club and a meeting room and lounge at the garden floor level.

Phase C





Front view



Side view



EKO
INDIGO PEARL
TOWER

ROYAL

EKO PEARL
PENTHOUSE

Phase C





Phase D





EKO
CHAMPAGNE PEARL
TOWER



EKO CHAMPAGNE PEARL TOWER

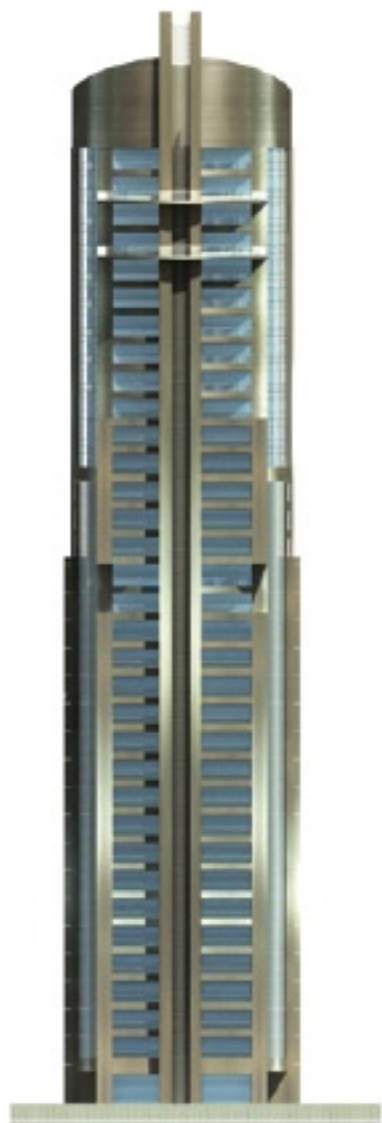
The tower consists of 33 residential floors and benefits from the common garden terrace at the top of the podium and has a private health club and a meeting room and lounge at the garden floor level.

Phase D





EKO
CHAMPAGNE PEARL
TOWER



Front view



Side view

ROYAL

EKO PEARL
PENTHOUSE

Phase D





Phase E





EKO
AQUA PEARL
TOWER



EKO AQUA PEARL TOWER

The tower consists of 24 residential floors and benefits from the common garden terrace at the top of the podium and has a private health club and a meeting room and lounge at the garden floor level.

Phase E





EKO
AQUA PEARL
TOWER



Front view

Side view

ROYAL

EKO PEARL
PENTHOUSE

Phase E







Celebrate Family

Eko Pearl Towers are dedicated to provide a relaxing and inspiring family life as well as secure living through contemporary inspired design and quality interiors. The project is aimed at giving residents the opportunity to celebrate family life in Nigeria to its fullest.

Eko Pearl Towers offer an ideal base for home life, with all that is expected from 21st century comforts and conveniences all primarily with oceanfront views.

This project provides housing solutions for the ever growing middle class through high rise buildings that will help benefit the city's status.

Overlooking the ocean, the five Pearl Towers create the only shadow over the gardens and the pool.

The towers cover a total plot area of **22,738 sqm** that includes the following leisure features:

- A swimming pool
- 2 tennis courts
- A squash court
- Children's playground
- Landscaped paths and sitting areas
- Open-air bar

In addition to living in the newest prime area of Lagos, residents will enjoy **first class** infrastructure facilities, including uninterrupted power, water, and security services.





An architectural rendering of the Eko Pearl Towers, a modern high-rise building with a light brown wood-grain facade and cantilevered balconies. The building is set against a blue sky with scattered white clouds. In the foreground, there are several palm trees and a white building with a wooden entrance area. The text 'Eko Pearl Towers' is written in a large, elegant, white serif font, with the subtitle 'A Huge Lifestyle Vision For Eko Atlantic City' in a smaller, similar font below it.

Eko Pearl Towers
A Huge Lifestyle Vision
For Eko Atlantic City

ENTRANCE A

Development & Specifications

Facilities/Services Provided

- Electricity **24 Hours**
- 5 to 6 elevators in each tower
- Swimming Pool
- Squash Court
- Well-equipped Gym
- Landscaping
- Children's Playground
- Ducting provision for Telecommunications
- Paved Driveways and Walkways

The parking spots are distributed between the basement floor & ground floor (covered) Each apartment will have a minimum of 2 parkings.

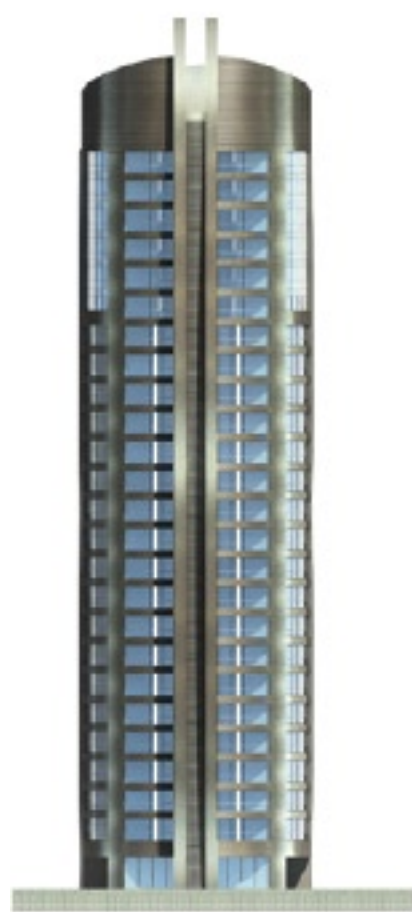
In addition, 30% of the allocated parking spots are specially dedicated for visitors

Storage space for each apartment.

Finishing

FLOORS AND WALLS:

- Lobbies/Stairs on typical floor level
Marble or Granite
- Lobbies/Stairs at Basement (Floor and Skirting)
Marble or Stone
- Reception Area & Balcony
Marble
- Bedrooms
European Ceramic or Equivalent
- Master Bathroom/Guest Toilet
Marble or European Ceramic or Equivalent
- Kitchen/Bathroom
European Ceramic
- Maid's Bathroom
Ceramic
- Ground Floor External Access Area
Stamped Concrete or Pavement Stones



Front view



Side view



Tower A, *The White Pearl*, portrays innocence, beauty, purity and new beginnings.

DOORS

- Storage and Maid's Room

Painted Wooding Door

- Typical Door at Floor

Wood Door Veneered with Walnut or Equivalent

- Main Entrance Door

Hardwood Veneered with Walnut or Equivalent

- Service Entrance Door

Wood Door Veneered with Walnut or Equivalent

WINDOWS/ALUMINIUM DOORS

All in **anodised aluminium** profiles with mosquito net.

KITCHEN

High quality fitted kitchen (Fridge/Freezer, Washing Machine, Dish Washer, Oven, Top Cooker and Board)

The Kitchen floor is high standard European ceramic and the kitchen cabinet is of international standard

SANITARY WARES AND FITTINGS:

High standard international brands

- *Vitra, Duravit, Villeroy and Boch* or other brands similar in quality



Front view



Side view



Tower B, *The Black Pearl*, is a rare gemstone that represents wealth and prosperity.

ELECTRICAL SWITCHES AND SOCKETS, MAIN PANEL

All of **High Standard**

AIR CONDITIONERS

VRV Systems, LG, McQuay or similar brands of high quality.

OTHERS

- Ventilation
Mechanical Ventilation for all basements

- Fire Detector System
Siemens or brands of similar quality

- Lightning Protection

- Satellite and Master Antennae

- Video Phone System

- Painting
Very **high quality** paints



Project Credits

Main consultant - Architecture
TAA: Tabet Atelier d Architecture

Electro - mechanical: **SERT**

Structure: **Eng. Bernard Zeinoun**

Construction management:
TAA Construction

N.B: The rendered pictures were done in order to facilitate the view of the different parts of the apartment and show you its potential furnished look.

Please note that the apartments will not be delivered to the clients decorated and/or furnished.

